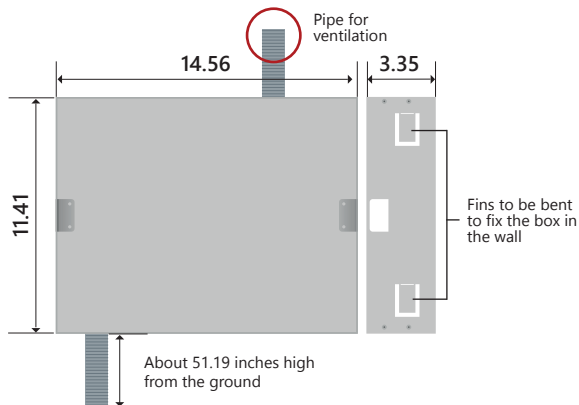
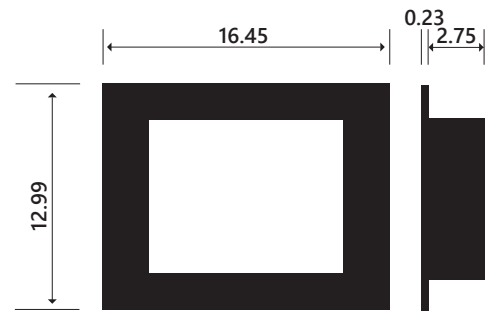


## Instructions for wall mounting



Flush-mounted box

## Dimensions (in)



## Description and instruction for installation

Developed in collaboration with Microsoft® e Intel®, the Glass 3S is a flush-mounting PC with advanced technological features, that fully satisfies those who seeks high performances: thanks to its fluid and fast graphic, its Multi-Touch, the microphone and the integrated speakers, in Easydom Glass 3S hardware and software perfectly merge together to realize an interactive and highly technological tool through which managing the house. The tempered front glass and the elegant design make it a furnishing element suitable for every setting.

Accommodate the Glass 3S in the Easydom flush-mount box installed horizontally at a height of 51.19 inches above the floor. (box not provided)

The PC comes with 1 pair of brackets, 2 studs, 6 spacers, and the screws for mounting on Easydom cassette. First, you need to install the fixing brackets into the junction box. Be sure that the box is placed on a perfectly flat surface, for example using a spirit level, and that it's placed flush with the wall as the Glass 2 PC is provided with a plug-in fastening system on the brackets' connector.

The power supply for the Glass 3S PC is provided by the BUS and it's necessary to install an additional AL24B power supply unit.

**The maximum distance for the power supply unit's installation is 9.83 ft with cable section greater than 0.00155 in<sup>2</sup> for + and - power cables.**

**WARNING: cables and pipes for the connection should come from the bottom. You need to bring at least a pipe of 0.984 or 1.259 in to create a minimum internal aeration. We suggest to add a protection switch dedicated for the PC direct power supply.**

Despite the presence of proper and resistant protections, a wrong connection could cause damages to the device, voiding the guarantee. Easydom takes no responsibility for a misuse of products.

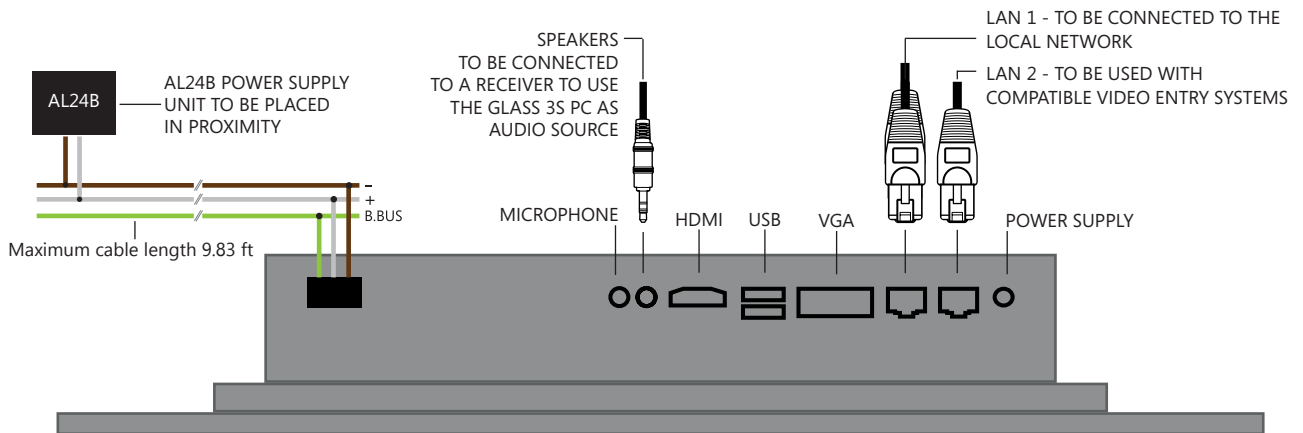
## Technical features

USABLE DISPLAY AREA	11.96 in x 8.97 in	USAGE TEMPERATURE	50.0 – 104.0 °F no condensation
DISPLAY	15 inches TFT backlit LED	FRONT	glass
FORMAT	4:3	FINISHING COLOURS	black and white
OPTIMAL RESOLUTION	1024 x 768	WEIGHT	148.15 ounces
GRAPHIC CARD	Intel HD	CONSUMPTION	from 15 to 35 Watt
CONTRAST	700:1	AUDIO	Integrated audio amplifier and 6W loudspeaker
COLOURS	16 millions		Active integrated microphone with echo cancellation
TOUCH SCREEN	Capacitive Multi-Touch up to 10 touches. Invisible Mesh	POWER SUPPLY	Through Easydom B.BUS with integrated B.BUS communication
BRIGHTNESS	400 cd/m <sup>2</sup> backlit LED	OPERATIVE SYSTEM	Windows 10 home
VIEW ANGLE	Up 80°, Down 60°, Right 80°, Left 80°	OTHER FEATURES	2 Ethernet 10/100/1000 RJ45
INPUT VIDEO FORMAT	LVDS (24 bits each colour)		1 x USB 3.0 and 1 x USB 2.0
PROCESSOR	Microprocessor celeron J1900 quad core 2.0 GHZ		1 x audio line out
SYSTEM MEMORY	DDR3 4GB		1 HDMI out 1.4
HARD DISK	SSD 64GB		1 VGA
			1 LINE IN



According to the current regulations, this product, at the end of its life, must be disposed separately from the urban waste (as specified by the symbol "crossed out dustbin" on the product). Therefore, the user will be in charge of the end-of-life products delivery to an adequate separate rubbish collection center or should give it back to the dealer at the moment of a new product purchase. The separate collection of rubbish is essential to reduce the potential Environmental and Health impact, resulting from an irregular disposal of electric and electronic devices at their end of life. For further information contact the local waste disposal service.

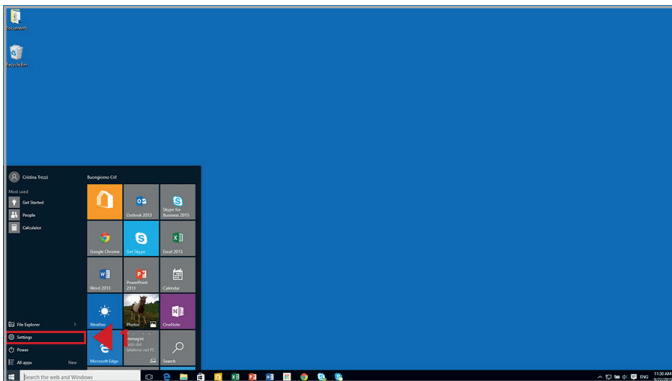
## Wiring diagram



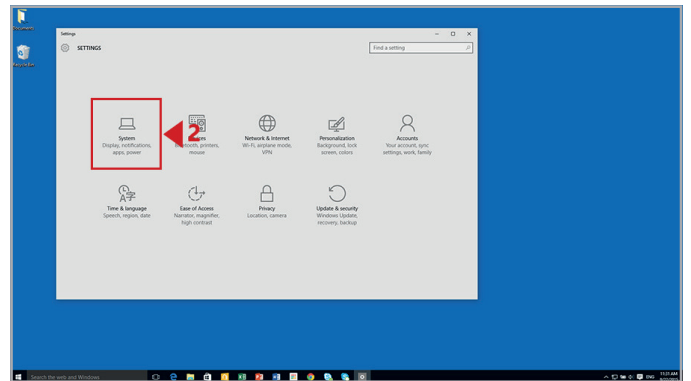
### WARNING!

If in the system there are more than one Easydom Glass 3S connected to the same LAN, we suggest to change the computer's name in Windows properties, to prevent network's conflicts.

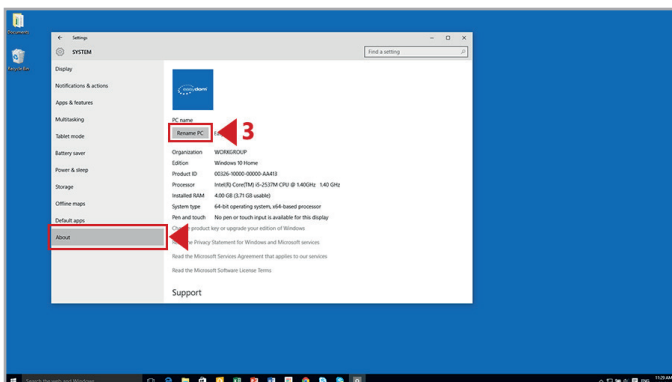
## HOW TO RENAME THE PC



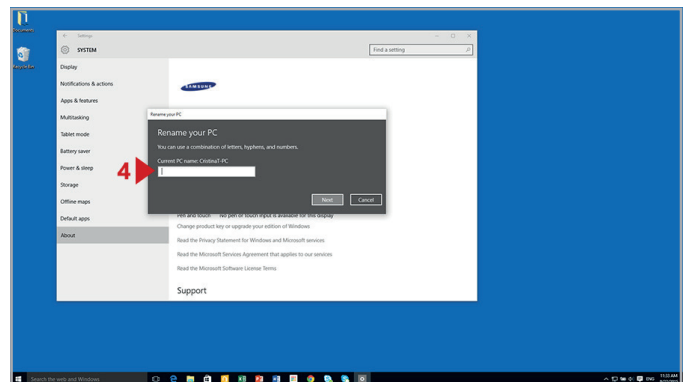
1 - Click on "Settings"



2 - Click on "System"



3 - Click on "About" and then click on "Rename PC"



4 - Choose the new name and click on Next.

6 - Restart to change the PC name or wait for the next start.